



TK CONN

Aseptic Connection



Sanitary
flow
equipment

TK CONN

ASEPTIC TANK CONNECTION, WITH BOLTED SPLIT RINGS

Fig. 1 TK- CONNECTION

Available in size from 3/4" up to 4", DN10 up to DN100 in four different thickness : std, 25 mm, 38 mm, 51 mm According to ASTM A269 /270, ISO 1127 or DIN 11851. Material 1.4404 – 1.4435 – Hastelloy C22 – C276 on request. Designed for use of standard clamp gaskets. According to PED 97/23/CE directive and ASME VIII Div.2

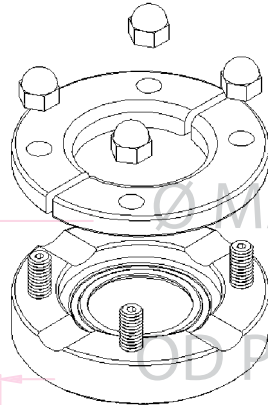


Fig. 2 TK- CONN BLOCK HOUSING

For special applications onto tank welding. According to ASTM A269 /270, ISO 1127 or DIN 11851. Material 1.4404 – 1.4435 - Hastelloy C22 – C276 on request. Non-standard product, custom thicknesses, avoids warping.

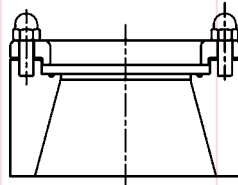


Fig. 3 TK- CONN ANGLED HOUSING

Angle profile cutted TK-Connections customized. For tank welding where orthogonal connections required Special execution High/angle as to be agree. Material 1.4404 – 1.4435 - Hastelloy C22 – C276 on request

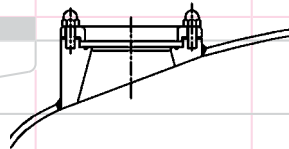


Fig. 4 TK- CAP

Standard TK-Connections in various size machined directly in a special 8 -10 or 12" clamp tank cover cap for pharma and biotechnology applications, custom made on request Std. material 1.4404, 1.4435 on request

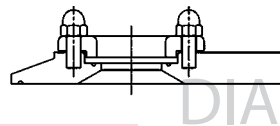
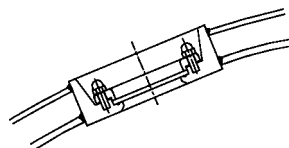


Fig. 5 TK- CONN JACKET HOUSING

TK-Connections with special profile dedicated for pharmaceutical reactors with cool/heat jacket or thermal insulation cladding.



For non-standard TK-CONN options please contact: info@aerreinox.it

TK IN-LINE

Pressure directive:

The TK-Connection are designed according to directive PED 97/23/CE for Europe, ASME VIII Div.2 for US and F.E.M. (Finite Element Method) calculated, approved and certified by notified body.

Operating conditions:

Design Pressure : -1 bar to 7 bar g
(-14,5 psi to 101,5 psi)
Design Temperature : -80°C to 200°C
(-112°F to 392°F)

Material:

welding flange ASTM A 479 / ASTM A 182 - 316L
locking ring ASTM A 479 / ASTM A 182 - 316L
bolts ASTM A 193 B8 - 304
nut ASTM A 194 8 - 304

Surface Finish:

Product contact surface are finished to Ra<0,5 mm or better

Documentation:

TK-Connection supply include the following documentations:

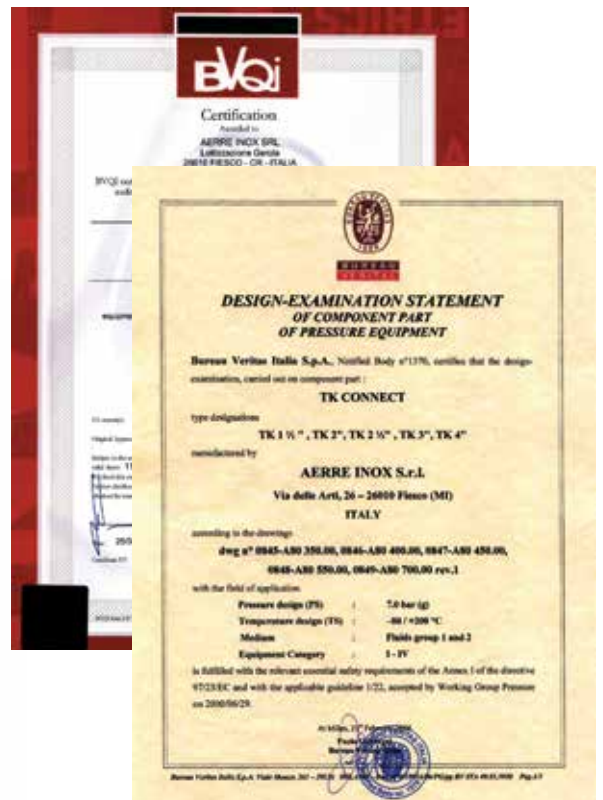
- PED conformity certificate
- welding guideline
- 3.1B certificate on wetted parts

Marking:

Each TK-Connection is marked with Heat No. for full lot traceability



HN 500726
316L



TK IN-LINE

Fig. 6 TK IN-LINE HOUSING

Available with clamped or butt weld ends for pipe standard according to ASTM A269 /270, ISO 1127 or DIN 11851. Special extended tube for orbital welding on request.

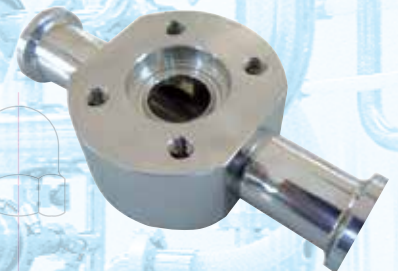
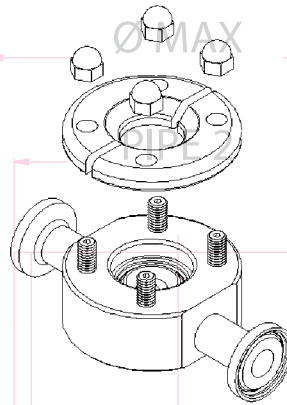


Fig. 7 TK IN-LINE ANGLE HOUSING

90° Angle in-out. Available with clamped or butt weld ends for pipe standard according to ASTM A269 /270, ISO 1127 or DIN 11851.

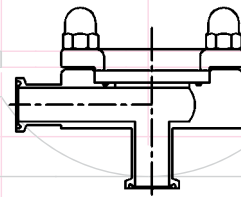


Fig. 8 TK IN-LINE THREE WAY HOUSING

Three way equal (drain reduct available). Available with clamped or butt weld ends for pipe standard according to ASTM A269 /270, ISO 112 or DIN 11851.

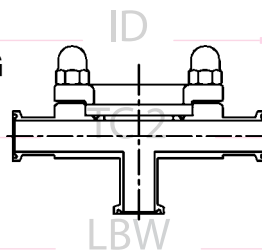
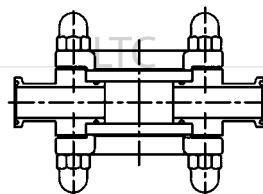


Fig. 9 TK IN-LINE DOUBLEX HOUSING

In-line version completely open on both sides.



Ordering information

To specify the part completely, start with the product description and select the additional options as shown below:

TK for Tank	connection	size	thickness	finish	material
TKC-	A	M	017	-12	A

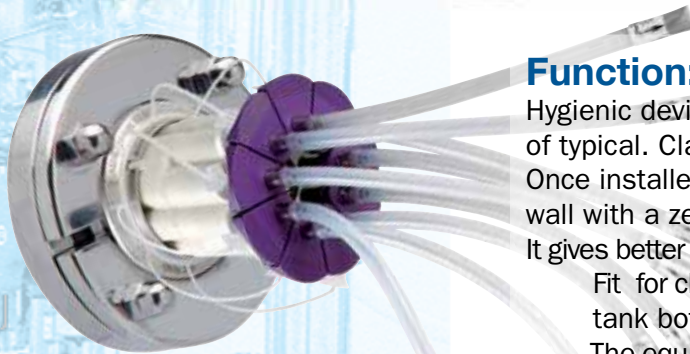
TK for Line	Housing connection	size	Line connection	Line size	finish	material
TKL-	A	M	B	H	-12	A

Standard Connection	Thickness		Materials
	Clamp	ButtWeld	
ASME / BS	A	B	A AISI 316L-1.4404 B 1.4435
DIN	C	F	C C22 Hastelloy
ISO	H	I	D C276 Hastelloy
SMS	J	K	on request

Size Connection	G	H	J	M	N	O	P	R	V	W	X	Surface Finish
	1/2"	3/4"	1"	1 1/2"	2"	2 1/2"	3"	4"	6"	8"	10"	
Standard Thickness	015	015	017	017	017	017	020	020	030	035	045	12 ≤ 0,5 µm 82 ≤ 0,2 µm 52 ≤ 0,5 µm + Electropolish on request

TK CONNECTION

FLUSH MOUNTED TC CONNECTION



Syringe device
on TK connection

Function:

Hygienic device features a compact design that allow the installation of typical. Clamp-connections on top, bottom or side wall of a tank. Once installed, the clamp gasket shuts off flush with the inside tank wall with a zero dead leg.

It gives better CIP/SIP (Cleaning In Place/Sterilisation In Place) performance.

Fit for clamped valves, sight glasses, sampling devices, manometer, tank bottom valves.

The equipment can be removed and the TK sealed with a standard blind cap.

Design:

The TK-Connection consist in:

- WELDING FLANGE drainable, in accordance with PED directive available in different thickness and complete with BOLTS
- LOCKING RING split in two parts for easier mounting of the equipments and double safety.
- NUTS in quantity of 4, 6, 8 (size depending)

Requirement:

The TK-Connection meets the followings:

- ASTM A270 for pipe standard
- SMS 3008 for tube standard
- ISO 1127 serie 1 for tube standard

Feature:

- eliminates dead leg
- no product entrapment
- ensures quality of CIP/SIP procedure
- no air pockets during sterilisation
- flexible, fast and easy to adjust different equipment
- full material traceability
- PED 97/23/CE certified product
- customized for your needs



sampling valve on TK Connection
Typ. installation



ASEPTIC SAMPLING VALVES



SANITARY SAMPLING VALVES



SANITARY SAMPLING BOTTLE



TANK BOTTOM ASEPTIC VALVE



SPRING CHECK VALVES



HIGH PURITY BALL VALVES



BUTTERFLY VALVES



DTS HEAT EXCHANGERS



SIGH GLASS-FLOW INDICATOR



CLAMP FITTINGS



TANK CONNECTIONS



SILICONE HOSE & FITTINGS



MAGNETIC MIXER



DIAPHRAGM VALVES



WASHING DEVICES



Sanitary flow equipment

AERRE INOX s.r.l.
 Via Gerola, 4
 I-26010 Fiesco (Cremona)
 Tel. +39 0374 370 828 Fax +39 0374 370 833
www.aerreinox.it

BIMEX
 Vertriebs-, Handels- und Service GmbH

Tel. +49(0)30/3670 50-90
 Fax +49(0)30/3670 50-92
 E-Mail mail@bimex-gmbh.de
 Web www.bimex-gmbh.de

Zimmerstraße 22
 D-13595 Berlin

Get the information you need and more at info@erreinox.it